

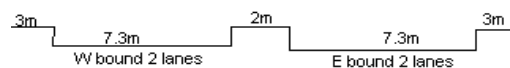
YEAR 2013

CORE STATION 5032

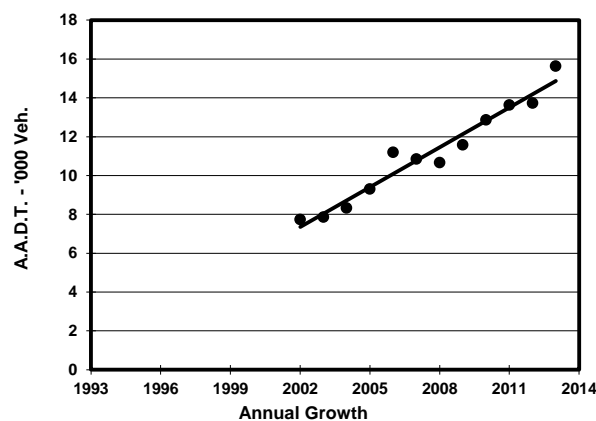
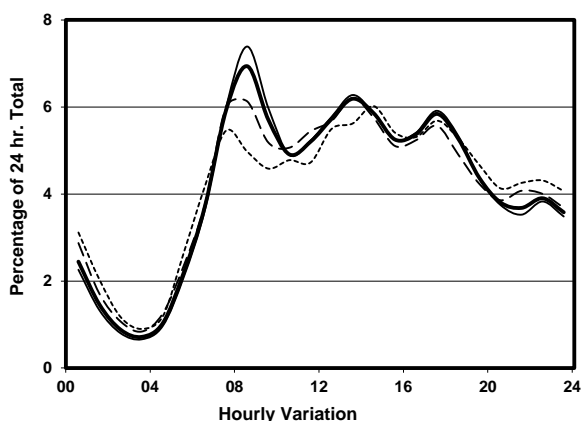
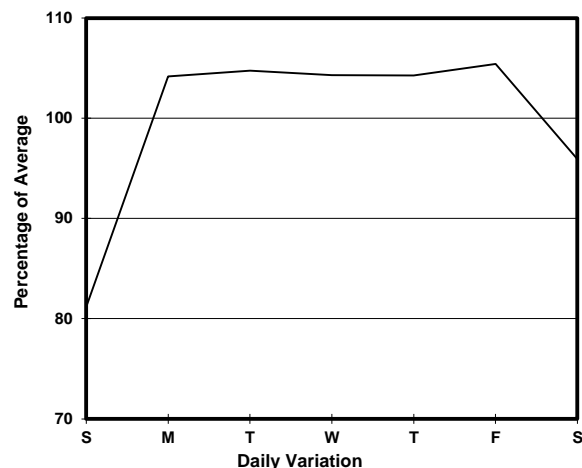
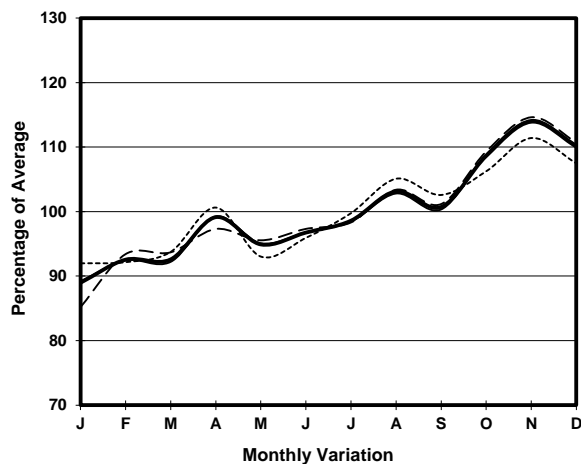
ROAD NETWORK MAJOR

ROAD TYPE DISTRICT DISTRIBUTOR

LINK CHEK LAP KOK S RD (from EASTERN END AT TUNG CHUNG to WESTERN END AT CHEK LAP KOK)



## 1. TRAFFIC FLOW VARIATION AND GROWTH



## 2. TRAFFIC CHARACTERISTICS (BY DIRECTION)

| Parameter                            | All - Day | Mon. - Fri. | Sat.      | Sun.      |
|--------------------------------------|-----------|-------------|-----------|-----------|
| <b>EAST BOUND</b>                    |           |             |           |           |
| A.A.D.T.                             | 7720      | 8170        | 7480      | 6310      |
| R 12 / 24 - %                        | 69.5      | 70.3        | 67.8      | 65.4      |
| R 16 / 24 - %                        | 84.7      | 85.4        | 83.5      | 81.7      |
| AM Peak Hour                         | 0800-0900 | 0800-0900   | 0800-0900 | 0700-0800 |
| One-way flow at AM peak hour         | 530       | 580         | 460       | 360       |
| T - % (AM)                           | -         | -           | -         | -         |
| PM Peak Hour                         | 1700-1800 | 1700-1800   | 1700-1800 | 1700-1800 |
| One-way flow at PM peak hour         | 490       | 530         | 450       | 350       |
| T - % (PM)                           | -         | -           | -         | -         |
| Prop.of commercial vehicles - 16 hr. | -         | -           | -         | -         |
| <b>WEST BOUND</b>                    |           |             |           |           |
| A.A.D.T.                             | 7910      | 8360        | 7710      | 6440      |
| R 12 / 24 - %                        | 67        | 68.2        | 64.8      | 61.3      |
| R 16 / 24 - %                        | 83.2      | 84.1        | 81.4      | 79.7      |
| AM Peak Hour                         | 0800-0900 | 0800-0900   | 0800-0900 | 0700-0800 |
| One-way flow at AM peak hour         | 560       | 640         | 480       | 340       |
| T - % (AM)                           | -         | -           | -         | -         |
| PM Peak Hour                         | 1700-1800 | 1700-1800   | 1600-1700 | 1700-1800 |
| One-way flow at PM peak hour         | 430       | 450         | 410       | 370       |
| T - % (PM)                           | -         | -           | -         | -         |
| Prop.of commercial vehicles - 16 hr. | -         | -           | -         | -         |

## 3. OTHER INFORMATION AND COMMENT